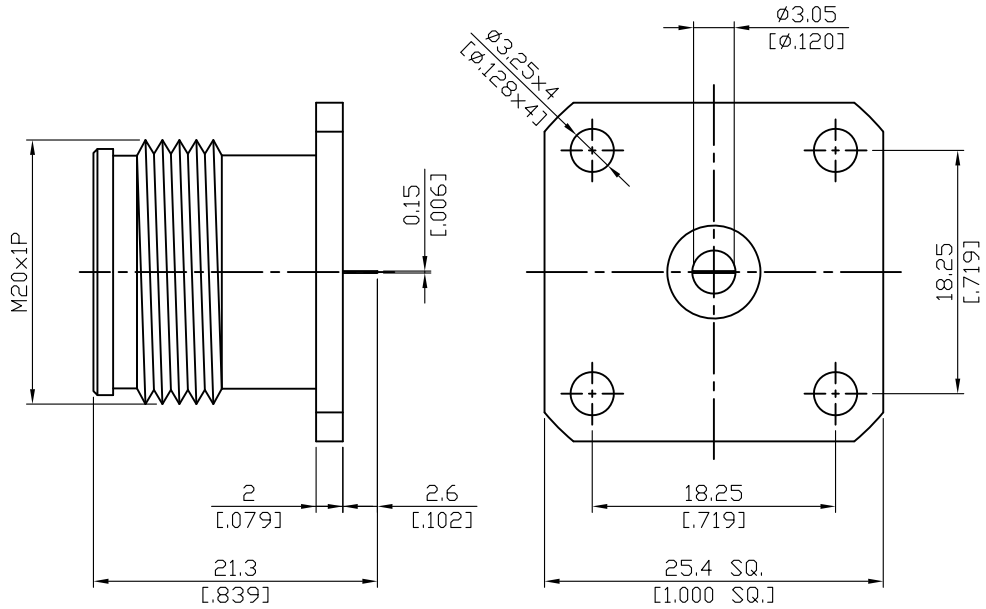


4.3-8640-0/2.6-TAB

4.3-10 Jack SQ 25.4mm 4 Hole Flange With Tab Contact  
(W=3.05;T=0.15;L=2.6); 6GHz VSWR 1.12

50Ω



Parts	Material	Plating ( Micro-inch )
Body	Brass	Tin-Zinc-Copper-Alloy 100 Over Copper 50
Contact Body	Phosphor Bronze	Tin-Zinc-Copper-Alloy 100 Over Copper 50
Insulator	Teflon	
Contact Pin	Phosphor Bronze	Gold 4 Over Nickel-Phosphorus Alloy 80 Over Copper 20

This part number complies with RoHS.

Notice: JYEBAO reserves the right to make modifications deemed appropriate.

4.3-10

4.3-8640-0/2.6-TAB

Interface

IEC 61169-54

Electrical Data

Impedance	50Ω
Frequency range	DC to 6GHz
VSWR	≤ 1.12 (DC to 6GHz)
Insertion loss	≤ 0.05 x √f(GHz) dB
Insulation resistance	≥ 5000MΩ
Contact resistance inner conductor	≤ 1mΩ
Contact resistance outer conductor	≤ 1mΩ
Dielectric withstanding voltage (sea level)	2500V rms
Working voltage (sea level)	500 V rms
RF leakage: screw type	≥ 120dB (DC to 6GHz)
RF leakage: hand screw and quick lock	≥ 90dB (DC to 3GHz); ≥ 70dB (3 to 6GHz)

Mechanical Data

Recommended coupling nut torque (screw type)	44 inch lbs
Coupling proof Torque (screw type)	70 inch lbs
Contact captivation-axial	≥ 6.3 lbs
Engagement force	22.5 lbs (typical)
Disengagement force	18 lbs (typical)
Durability (mating)	≥ 100

Environmental Data

Temperature range	-55°C to +90°C
Thermal shock	MIL-STD-202, Method 107, Condition B
Moisture resistance	MIL-STD-202, Method 106
Corrosion	MIL-STD-202, Method 101, Condition B
RoHS	Compliant

# 4.3-8640-0/2.6-TAB

