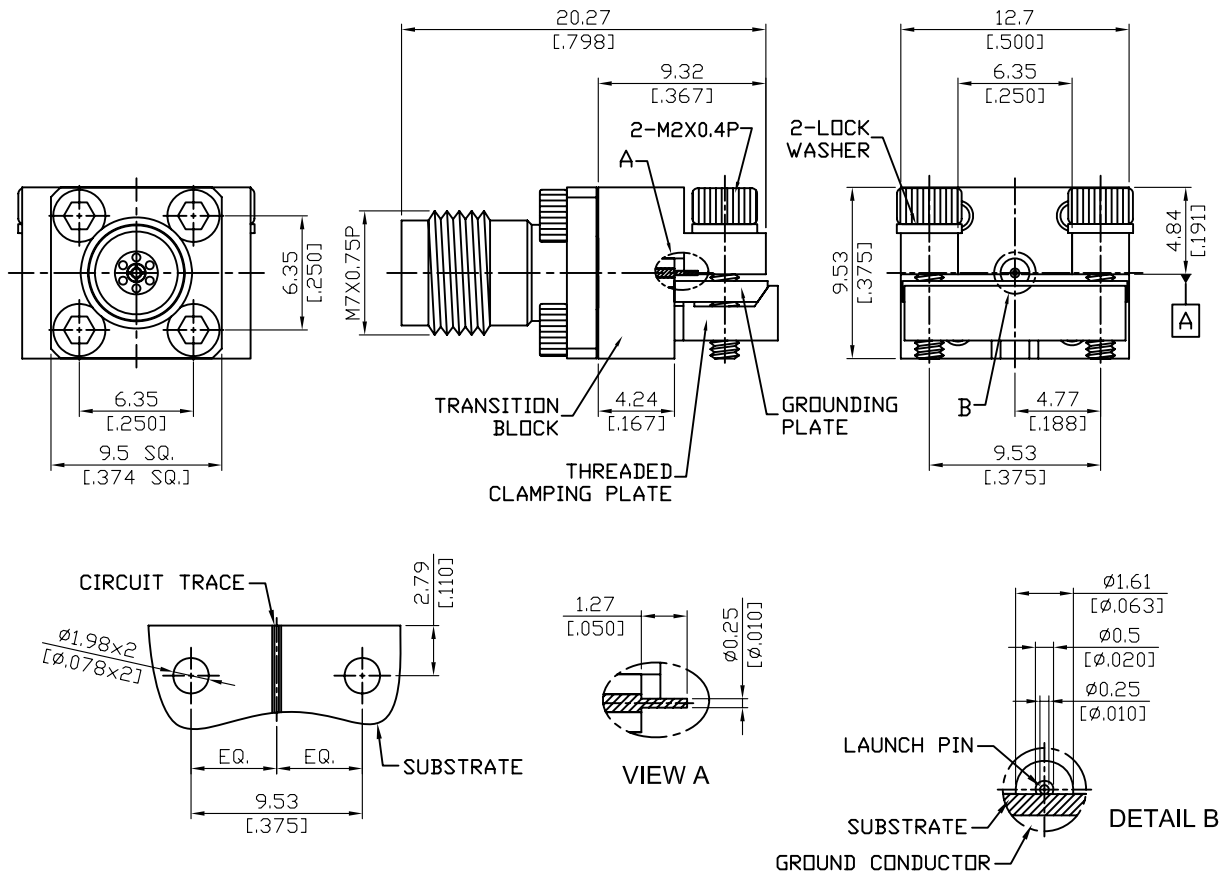


2.4-84LP-10/20

2.4mm Jack Low Profile 2 Hole End Launch  
With  $\Phi 0.25\text{mm}(.010\text{ inch})$  Launch Pin

50 $\Omega$



NOTE: LOW VSWR ; DIRECT MATCH TO SOUTHWEST MICROWAVE P/N 1492-02A-6

Parts	Material	Plating ( Micro-inch )
Lock Washer	Stainless Steel	Passivated
Screw	Stainless Steel	Passivated
Launch Pin	Beryllium Copper	Gold 4 Over Nickel-Phosphorus Alloy 80 Over Copper 20
Insulator (for launch pin)	PTFE	
Grounding Plate	Brass	Tin-Zinc-Copper-Alloy 100 Over Copper 50
Clamping Plate	Brass	Tin-Zinc-Copper-Alloy 100 Over Copper 50
Transition Block	Brass	Tin-Zinc-Copper-Alloy 100 Over Copper 50
Contact Pin	Beryllium Copper	Gold 4 Over Nickel-Phosphorus Alloy 80 Over Copper 20
Insulator	PEI	
Body	Stainless Steel	Passivated

This part number complies with RoHS.

Notice: JYEBAO reserves the right to make modifications deemed appropriate.