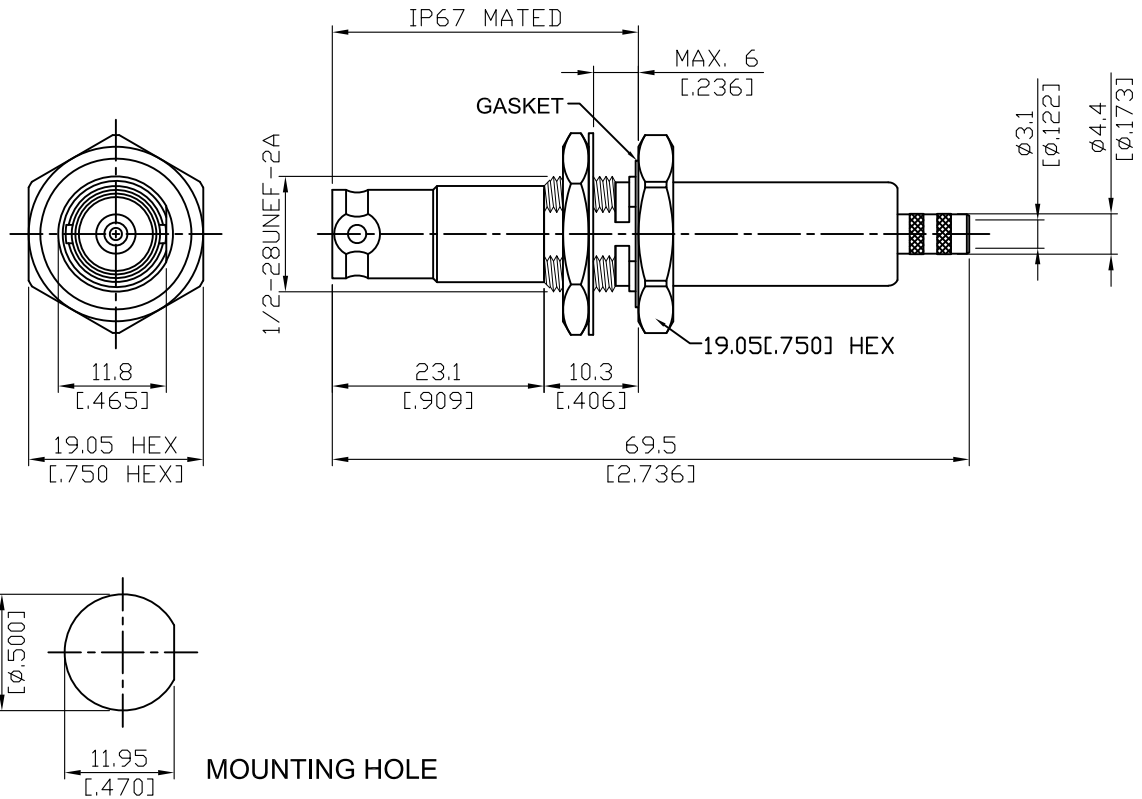


10KV-8105-0058

10KV Jack Crimp Bulkhead,
IP67 Mated, For RG58, JBY195, LMR195



Parts	Material	Plating (Micro-inch)
Ferrule	Brass	Tin-Zinc-Copper-Alloy 100 Over Copper 50
Hex Nut	Brass	Tin-Zinc-Copper-Alloy 100 Over Copper 50
Gasket	Silicone	
Contact Pin	Brass	Gold 4 Over Nickel-Phosphorus Alloy 80 Over Copper 20
Insulator	High Density PE	
Body	Brass	Tin-Zinc-Copper-Alloy 100 Over Copper 50

Suitable Cables: RG58; JBY195; JBY195-LSFH

This part number complies with RoHS.

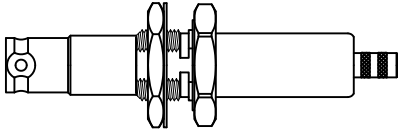
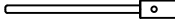

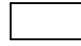
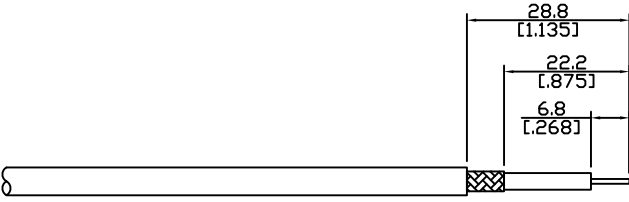
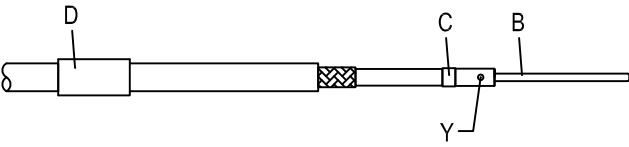
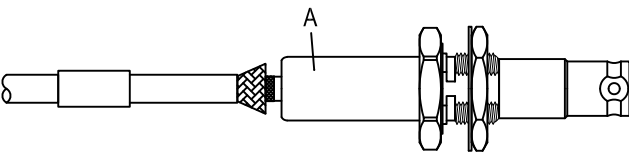
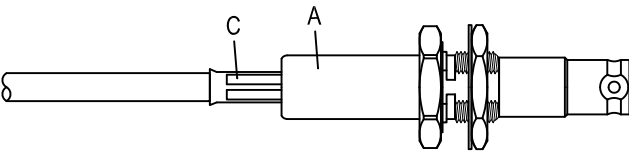
Notice: JYEBAO reserves the right to make modifications deemed appropriate.

10KV	10KV-8105-0058												
<div data-bbox="118 327 517 376" style="border: 1px solid black; padding: 2px;">Interface</div> <p>Mechanically compatible with Kings 10KV series</p>													
<div data-bbox="118 490 517 539" style="border: 1px solid black; padding: 2px;">Electrical Data</div> <table border="0" style="width: 100%;"> <tr> <td style="width: 50%;">Impedance</td> <td style="width: 50%;">non constant</td> </tr> <tr> <td>Insulation resistance</td> <td>1000GΩ</td> </tr> <tr> <td>Contact resistance inner conductor</td> <td>≤ 3mΩ</td> </tr> <tr> <td>Contact resistance outer conductor</td> <td>≤ 2mΩ</td> </tr> <tr> <td>Test voltage (at sea level)</td> <td>15KVDC</td> </tr> <tr> <td>Working Voltage (at sea level)</td> <td>10KVDC</td> </tr> </table>		Impedance	non constant	Insulation resistance	1000GΩ	Contact resistance inner conductor	≤ 3mΩ	Contact resistance outer conductor	≤ 2mΩ	Test voltage (at sea level)	15KVDC	Working Voltage (at sea level)	10KVDC
Impedance	non constant												
Insulation resistance	1000GΩ												
Contact resistance inner conductor	≤ 3mΩ												
Contact resistance outer conductor	≤ 2mΩ												
Test voltage (at sea level)	15KVDC												
Working Voltage (at sea level)	10KVDC												
<div data-bbox="118 1019 517 1068" style="border: 1px solid black; padding: 2px;">Environmental Data</div> <table border="0" style="width: 100%;"> <tr> <td style="width: 50%;">Temperature range</td> <td style="width: 50%;">-55°C to +85°C</td> </tr> <tr> <td>Corrosion</td> <td>MIL-STD-202, Method 101, Condition B</td> </tr> <tr> <td>RoHS</td> <td>Compliant</td> </tr> </table>		Temperature range	-55°C to +85°C	Corrosion	MIL-STD-202, Method 101, Condition B	RoHS	Compliant						
Temperature range	-55°C to +85°C												
Corrosion	MIL-STD-202, Method 101, Condition B												
RoHS	Compliant												
<div data-bbox="118 1323 517 1373" style="border: 1px solid black; padding: 2px;">Tooling</div> <table border="0" style="width: 100%;"> <tr> <td style="width: 50%;">Crimping tool</td> <td style="width: 50%;">CRT-1 or CRT-2</td> </tr> <tr> <td>Crimp insert</td> <td>INSERT-B</td> </tr> </table>		Crimping tool	CRT-1 or CRT-2	Crimp insert	INSERT-B								
Crimping tool	CRT-1 or CRT-2												
Crimp insert	INSERT-B												

Notice: JYEBAO reserves the right to make modifications deemed appropriate.

JYE BAO CO., LTD.

CABLE ASSEMBLY RECOMMENDATION

10KV-8105-0058	DATE	2019/09/03	REV	A
A	B	C	D	
				
BODY + LOCK WASHER + GASKET + HEX NUT	CONTACT PIN	GASKET	FERRULE	
DIAGRAM	ASSEMBLY INSTRUCTION			
	Step 1: STRIP AS SHOWN.			
	Step 2: SLIDE FERRULE " D " OVER CABLE. Step 3: PUT GASKET " C " AND PIN " B " ON CENTER CONDUCTOR AND SOLDER IN " Y ".			
	Step 4: LOOSEN BRAIDING AND SLIDE CONNECTOR " A " IN PLACE.			
	Step 5: SLIDE FERRULE " C " TOWARDS THE CONNECTOR " A " AND CRIMP. (USE 5.5mm/0.217inch HEX SECTION OF INSERT-B)			
This part number complies with RoHS. Notice: JYEBAO reserves the right to make modifications deemed appropriate.				
APPROVED	CHECKED	DRAWING		<i>Albert</i>